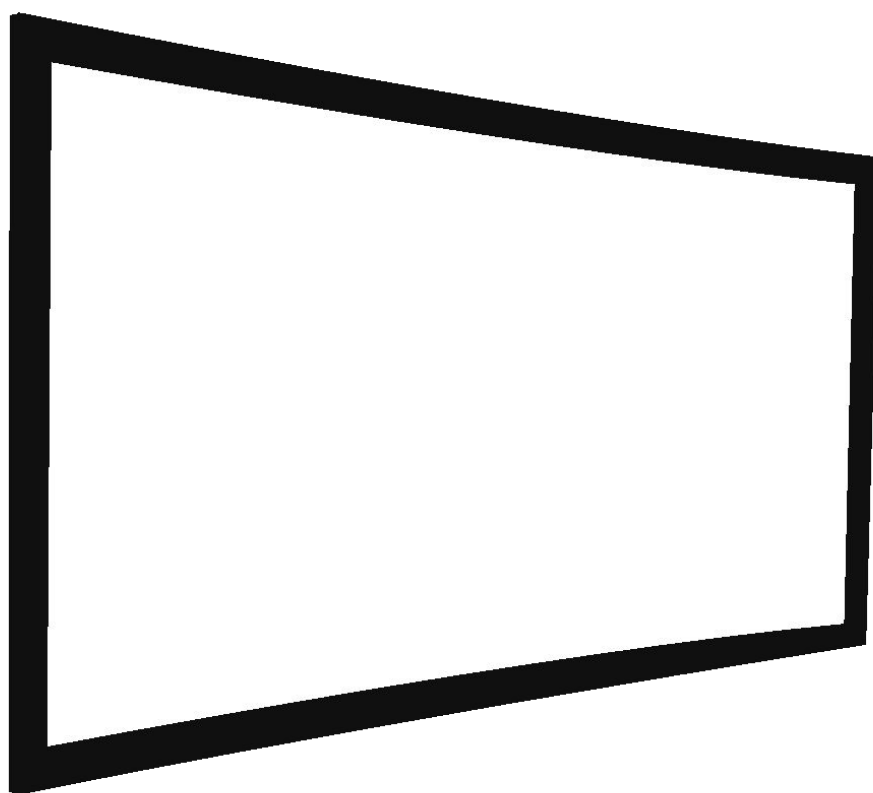




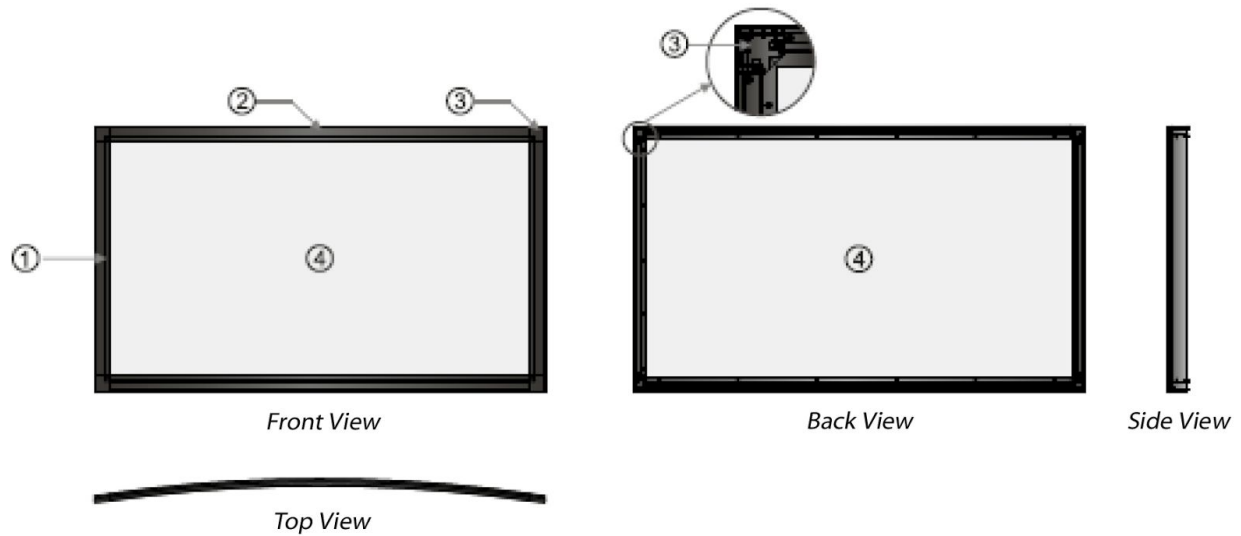
Instruction Manual for Deluxe Curved Series Fixed Frame



MODELS: CF235***

Thank you for purchasing a Severtson projection screen. Before use, please read the instructions carefully. After installation, store the instructions for future reference.

Overview



①	Side Frame	③	Connector Piece
②	Concave Frame	④	Screen Material

Parts Included

- Concave frame bars (2pcs)



- M8 x 30 mm corner connector screws (4pcs)



- Security screw (2pcs)



- Side frame bars (2pcs)



- Top and bottom installation bars(1set)



- Bracket (4pcs)



- $\phi 6$ mm horizontal tension bar (2pcs)



- $\phi 5$ x 40 mm tapping screw with anchor (4pcs)



- Fixing lug



- $\phi 6$ mm vertical tension bar (2pcs)



- $\phi 5$ x 10 mm screws (8pcs)



- M8 spanner (1pc)



- Instruction manual (1pc)

Installation Instructions

Take out all the parts from the packaging and verify that all the parts have been included, then follow the steps below to install the screen.

1. Locate top, bottom, and side frame pieces and lay them on a clean, flat surface (*Fig. 1*).

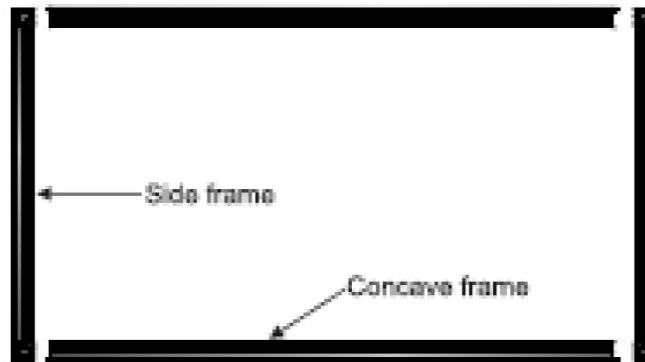


Figure 1

2. Slide the fixing lugs into the grooves on the back of each frame piece, aligning the lugs with the arrows (*Fig. 2-3*).

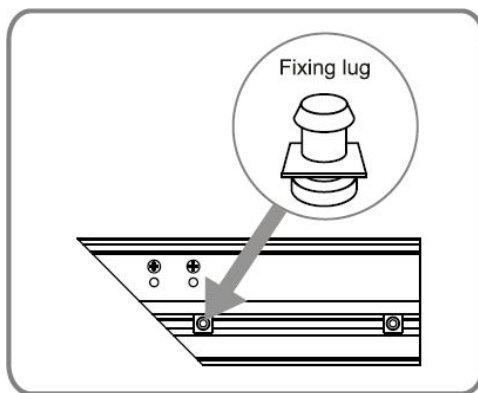


Figure 2

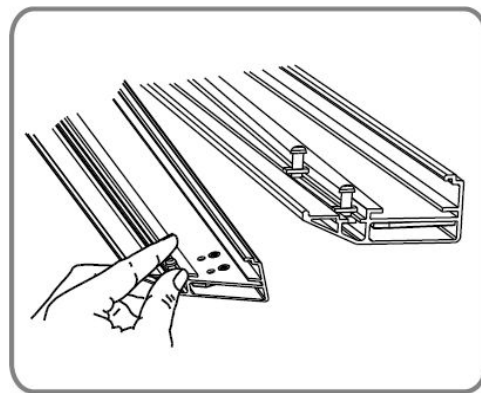


Figure 3

3. Connect the top and bottom frame pieces to the side frame pieces with the corner brackets. Adjust the corner bracket to match screw holes on the frame then secure with corner bracket screws. Repeat this step for each corner (*Fig. 4-6*).

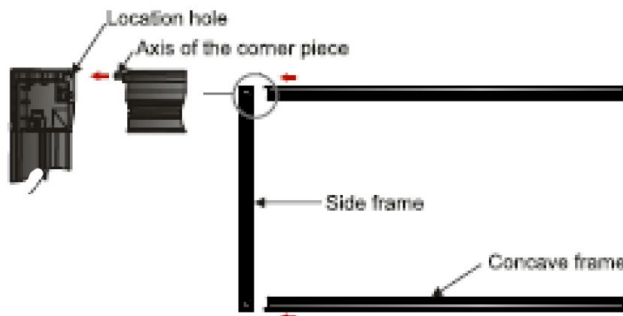


Figure 4

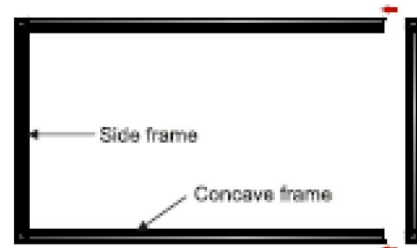


Figure 5

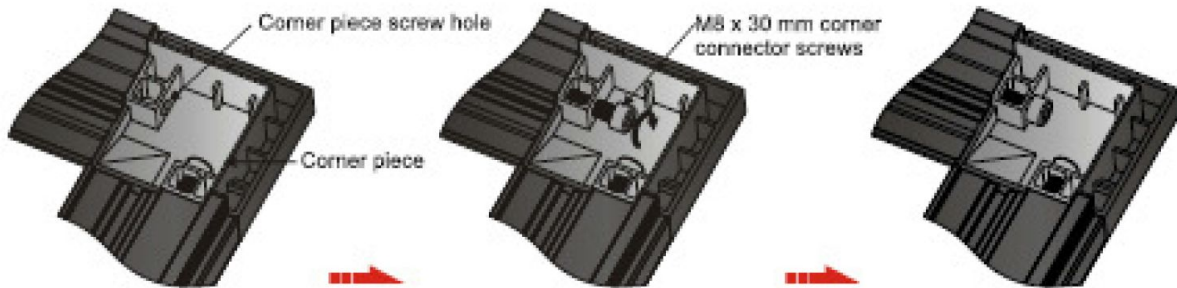


Figure 6

4. Unfold screen fabric as shown (Fig. 7).

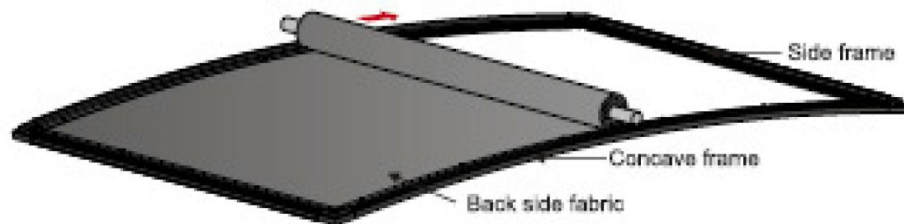


Figure 7

5. Insert the four tension bars into the pockets of the screen material. Be careful not to puncture the screen material (Fig. 8).

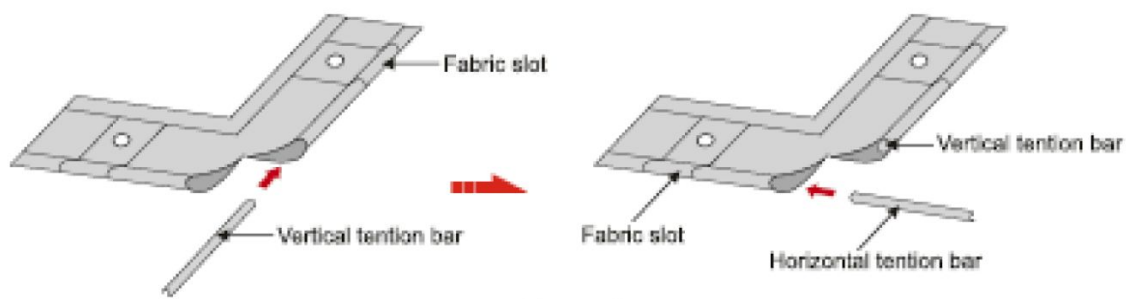


Figure 8

6. Align fixing lugs with the arrows (arrows are approximate). Starting in the middle of a short side, pull the tension bar over each of the fixing lugs, allowing the lugs to fit through the fabric holes (). Repeat for the other short side, then repeat for each of the two longer sides.

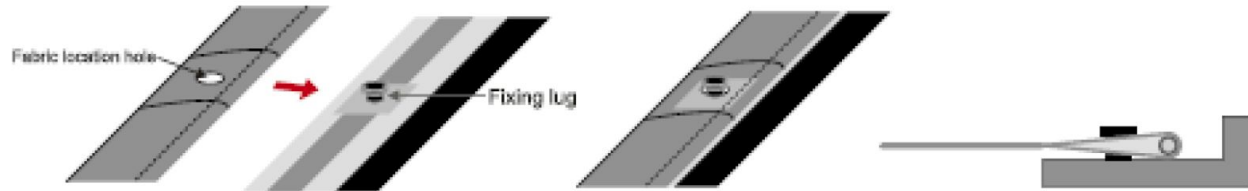


Figure 9

Note 6.1: For acoustically-transparent screen materials, please see *Appendix A: Black-Backing Instructions* in this guide for steps to attach the black backing fabric before mounting the screen on the wall.

7. Included are four brackets labeled 1-4. Slide these onto the frame, aligning each bracket with the matching number on the frame (Figure 10).

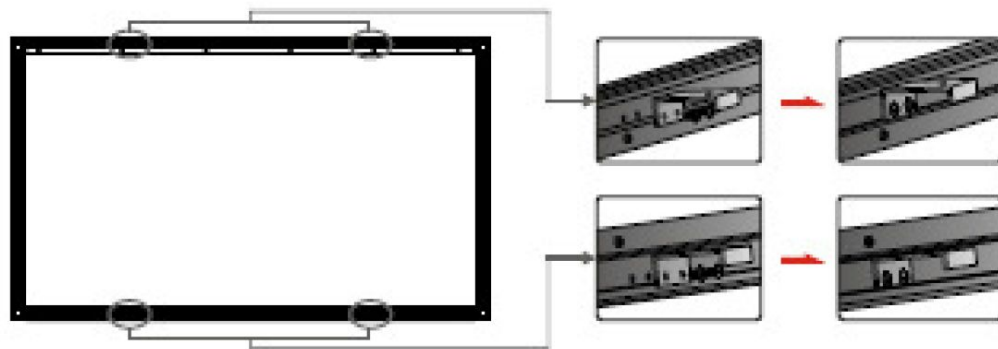


Figure 10

8. The top bracket should be mounted first approximately 2" lower than the desired location for the top of the frame. Once the placement of the top bracket is determined, follow the correct installation procedure for the wall material type (*see Note 8.2 below*) to fix the bracket to the wall. Once the top bracket is secured, push the bottom bracket down so the straps are very tight and then fix it to the wall (*Fig. 11*).

Note 8.1: The center of the mounting brackets should be placed as close to the desired center of the screen as possible. The brackets are approximately half the size of the horizontal frame which allows some horizontal fluctuation if needed.

Note 8.2: For a wood framed wall: Using four wood screws (5x40mm, two for each bracket) secure each bracket to the wall. Make sure that the screws penetrate into the studs of the framed wall, otherwise the brackets will not be securely fastened (*Fig. 12*). For a concrete wall: Use an electric drill to drill four holes (two for each bracket) and hammer the provided tapping anchors into each hole. Secure the brackets onto the wall by fastening the tapping screws to the tapping anchors (*Fig. 13*).

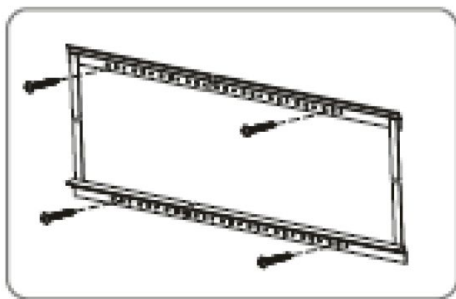


Figure 12

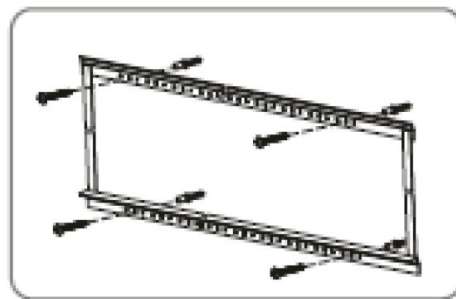


Figure 13

9. Pick up the assembled screen and lift it above the installation bars, then set it into the grooves of the installation bars, ensuring that all four brackets are in place (*Fig. 14*).

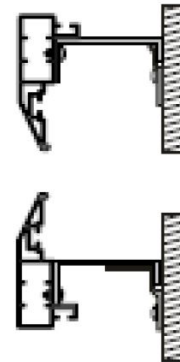
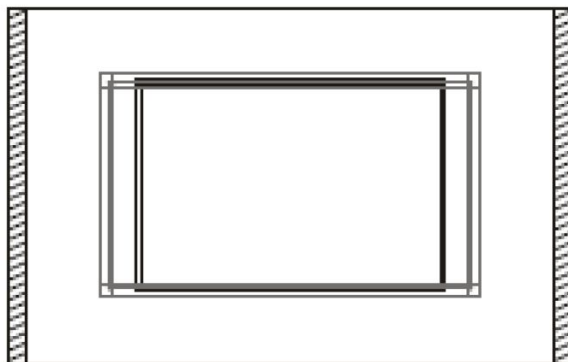


Figure 14

10. Fasten the screen frame to the installation bars with the included security screws. This will cause the screen, material to be pulled tight (*Fig. 15-16*).

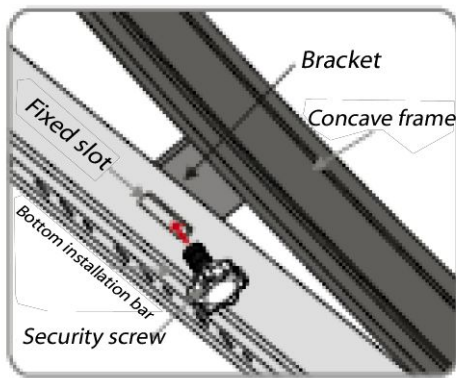


Figure 15

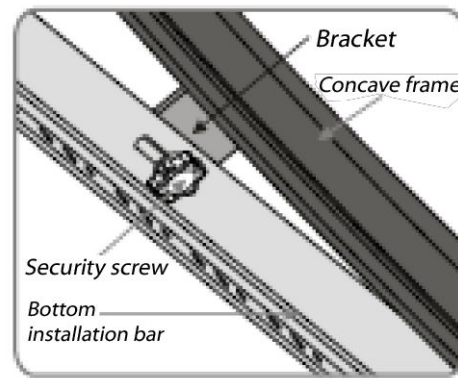


Figure 16

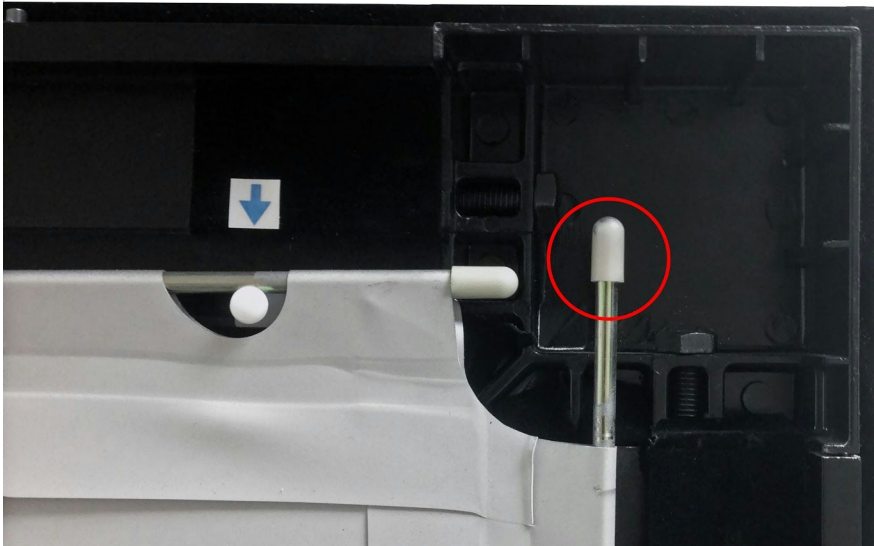
Appendix A: Black-Backing Instructions

Follow these instructions to properly secure the included black backing to a Severtson Screens Fixed Frame Projection Screen. This guide applies to all Deluxe Series Fixed Frame models.

This guide is intended to be followed after the rest of the screen has been fully assembled and before it has been installed in its intended location.

Before proceeding, be sure that the screen is fully assembled and laying front-side-down on a clean, flat surface.

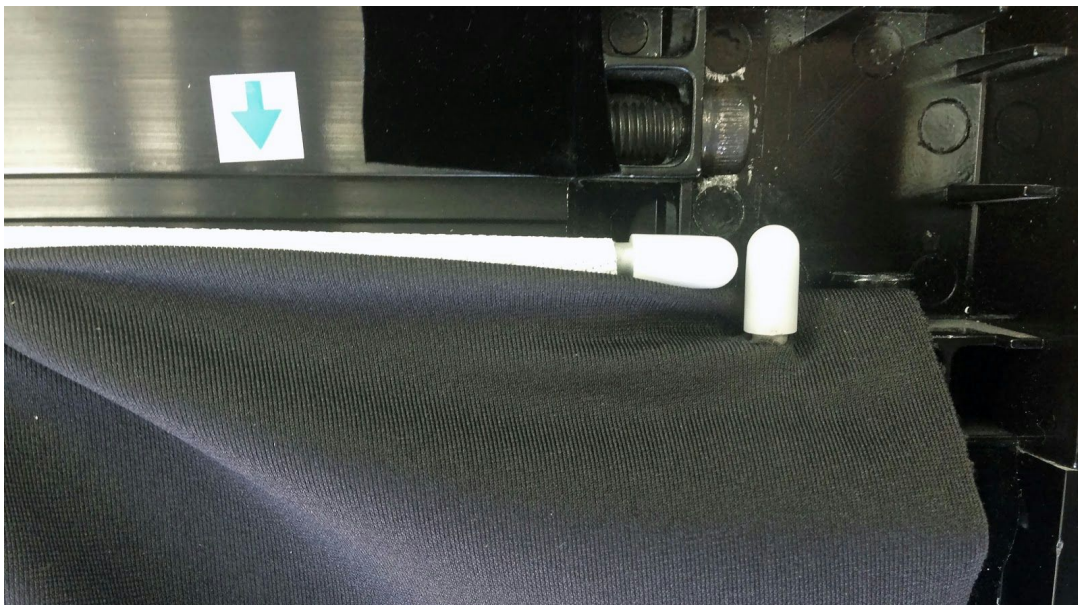
1. Locate the vertical tension rods. The two vertical tension rods on the back of the frame will be the primary support points where the black backing will be mounted. The black backing will end up hanging freely from the support points when properly mounted.



2. Line up the black backing. Lay each corner of the black backing onto the back of the frame. Ensure that the black backing is rotated the correct direction so that the entire back of the screen material will be covered by the black backing.
3. Punch the mounting holes in the black backing. Fold the top of the black backing onto itself about 1/2" to 3/4" so that the material will be doubled-up. Using the end of a screwdriver or scissors, punch a small hole through the doubled-up black backing at each upper corner.



4. Secure the black backing at each upper corner. Slide each corner of the folded-over black backing over the respective vertical tension rod, pushing the rod about 1/2" through the punched-out holes. Each vertical support rod will now have the black backing secured at each corner.



5. Secure the remainder of the black backing along the top edge. The black backing should now be secured at the two upper corners, but will be loose along the top edge. At the center and several other mounting points along the upper edge, release the screen tension rods from the pins and tuck the black backing through the notch in the screen material, then secure the rod in place. This will effectively tuck the black backing between

the tension rod and plastic pin so that it will be secured in place. Your black backing is now properly installed.



Warnings

1. The frame is made with lightweight aluminum. Please handle with care.
2. Make sure the fasteners used are firmly secured to the wall to avoid any damage.
3. When installing the screen material onto the frame, make sure it is facing forward (viewing side toward the projector).
4. Be careful not to scratch or damage the screen surface while handling it.
5. Do not write or draw on screen surface. Do not poke, fold, or tear screen material.
6. Do not use detergents or harsh chemicals to clean screen material. A soft cloth and mild soap can clean dust and dirt off the screen material. A cotton cloth can be used to gently wipe dust off of the frame.
7. Cover the screen to block out dirt and dust if it is not used for an extended period of time.
8. To prevent unnecessary damage, the assembly and maintenance of the screen should be done by adults.



Ignoring the safety warnings may lead to injuries and/or damaging the product.



Brackets should be installed in a secure place to avoid accidents caused by the screen falling.



Please contact your local dealer for repairs or maintenance. Please contact our company if you have any further questions.

Use caution when installing or removing the screen. Loose parts may cause the screen to fall.